

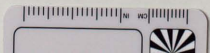
AIM Ann Report
1915 to 1916

ANNUAL REPORT
OF THE
AUCKLAND INSTITUTE
AND
MUSEUM,
FOR
1915-1916.

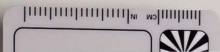
ADOPTED AT THE ANNUAL MEETING
HELD FEBRUARY 28TH, 1916.

Auckland:
THE BRETT PRINTING AND PUBLISHING CO., LTD., SHORTLAND STREET.
MCMXVI.

AIM Ann Report
1915 to 1916



AIM Ann Report
1915 to 1916





GROUP OF NORTH ISLAND KIWIS,
Showing the habits and mode of life of the species.

AIM Ann Report
1915 to 1916

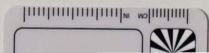
ANNUAL REPORT
OF THE
AUCKLAND INSTITUTE
AND MUSEUM
AND
MUSEUM,
FOR
1915-1916.

22 OCT 1928

ADOPTED AT THE ANNUAL MEETING
HELD FEBRUARY 28TH, 1916.

Auckland:
THE BRETT PRINTING AND PUBLISHING CO., LTD., SHORTLAND STREET.
MCMXVI.

AIM Ann Report
1915 to 1916



OFFICERS
OF THE
AUCKLAND INSTITUTE

President:

HON. E. MITCHELSON.

Vice-Presidents:

C. J. PARR, C.M.G.

PROF. H. W. SEGAR, M.A.

Council:

EGERTON, PROF. C. W., M.A.

PETRIE, D., M.A.

KENDERDINE, J.

POND, J. A., F.C.S.

MILLER, E. V.

THOMAS, PROF. A. P. W., M.A.

OWEN, PROF. G., D.Sc.

UPTON, J. H.

PEACOCK, T.

VAILE, H. E.

WORLEY, PROF. F. P., M.Sc.

Trustees:

PEACOCK, T.

REID, J.

UPTON, J. H.

Secretary and Curator:

T. F. CHEESEMAN, F.L.S.; F.Z.S.

Assistant and Preparator of Specimens:

L. T. GRIFFIN, F.Z.S.

Auditor:

S. GRAY, F.R.A.

The following
Periodicals and Publications
of Societies

are Subscribed to by the Institute:

NATURE.

THE PHILOSOPHICAL MAGAZINE.

THE AMERICAN JOURNAL OF SCIENCE.

AMERICAN CHEMICAL JOURNAL.

THE ELECTRICIAN.

THE PHYSICAL REVIEW.

COMPTE RENDUS DES SEANCES DE L'ACADEMIE DES SCIENCES.

ANNALS AND MAGAZINE OF NATURAL HISTORY.

QUARTERLY JOURNAL OF MICROSCOPICAL SCIENCE.

ANNALS OF BOTANY.

THE BOTANICAL GAZETTE.

THE GARDENER'S CHRONICLE.

JOURNAL OF AGRICULTURAL SCIENCE.

THE GEOLOGICAL MAGAZINE.

SCIENCE PROGRESS.

THE ECONOMIC JOURNAL.

THE LANCET.

MIND.

TRANSACTIONS AND PROCEEDINGS OF THE ROYAL SOCIETY.

TRANSACTIONS AND PROCEEDINGS OF THE ZOOLOGICAL SOCIETY.

THE ZOOLOGICAL RECORD.

PUBLICATIONS OF THE RAY SOCIETY.

JOURNAL OF THE CHEMICAL SOCIETY.

MONTHLY NOTICES OF THE ROYAL ASTRONOMICAL SOCIETY.

QUARTERLY JOURNAL OF THE GEOLOGICAL SOCIETY.

JOURNAL OF THE ROYAL AGRICULTURAL SOCIETY.

THE GEOGRAPHICAL JOURNAL.

REPORT OF THE BRITISH ASSOCIATION.

Report of the Council.

In compliance with the Rules of the Society, the Council now presents to the members the usual Annual Report on the progress of the Institute and the condition of its finances.

MEMBERS.—The number of new members added to the roll during the year has been 14. Against this, 35 names have been withdrawn; 6 from death, 22 from resignation or removal from the district, and 7 from non-payment of subscription for more than two consecutive years. The net loss has thus been 21, reducing the number on the roll from 356 to 335. For several years prior to the outbreak of the war it had been the pleasant duty of the Council to record an increase in the membership. That such is no longer the case cannot be looked upon as surprising, considering the strenuous times through which we are passing. The total change is so small that it cannot affect the position of the Institute, or in any way hamper its activities. It may be remarked that a similar reduction in numbers is being experienced by the other incorporated Societies.

Among the members removed by death, it is the painful duty of the Council to mention the names of Mr. A. E. T. Devore, for many years a consistent supporter of the Society; of Mr. W. C. C. Spencer; of Mr. A. Wiseman, and of Mr. W. Coleman. One member, Mr. S. B. Bowyer, has been killed in action in the Dardanelles, while serving his King and Country; and another, Dr. T. C. Savage, died from sickness in Egypt while engaged in a similar capacity in the medical service of the army. At the present time no less than 17 members of the Institute are serving in the expeditionary forces equipped and maintained by the Dominion.

FINANCE.—Balance sheets showing the financial position of the Institute are appended to this Report, but it may be convenient to present a brief synopsis here. The total revenue credited to the working account, excluding the balance in hand at the beginning of the year, and also omitting for the present the particulars of a temporary advance made from the Investment Account to cover the cost of fitting up the new Foreign Ethnographical Hall, has been £1,483 17s. 5d. The amount for

the previous year was £1,530 17s. 7d., so that there is a deficiency of £47 0s. 2d. Examining the separate items, it will be found that the members' subscriptions have reached £308 14s. 0d., against £322 7s. 0d. obtained last year. The slight decrease in membership already alluded to is sufficient explanation for this. The receipts from the Museum Endowment have been £550 16s. 10d., last year's amount being £537 14s. 5d. The invested funds of the Costley Bequest have realised £441 15s. 0d., against £480 15s. 0d. credited last year. The difference is partly due to a temporary delay in the payment of two items of interest, and partly to the fact that one of the securities has been discharged, thus causing a loss of interest for a brief period. The total expenditure has been £1,420 7s. 0d., but this does not include payments to the amount of £561 5s. 4d. on account of the expense of fitting up the new Foreign Ethnographical Hall, which have been met by means of an advance from the Investment Account. The cash balance in hand at the present time amounts to £282.

The position of the invested funds of the Society must be regarded as satisfactory. Such funds consist of those comprised under the headings Costley Bequest, Museum Endowment Account, Mackechnie Bequest, Campbell Bequest, and one or two minor divisions, and include all capital the annual income from which can alone be used for the purposes of the Society. The total of these funds has been materially increased during the year by the sale of some endowments, and now amounts to £21,457 18s. 5d., almost the whole of which is invested in specially selected mortgages or Government Debentures.

MEETINGS.—Eight meetings have been held during the year, at which the following papers were read and discussed:—

1. Europe: 1815 and 1915, A Survey and a Contrast.—By PROFESSOR J. P. GROSSMANN, M.A.
2. Constantinople.—By E. D. MACKELLAR, M.D.
3. Crystals.—By PROFESSOR F. P. WORLEY, D.Sc.
4. The Elizabethan Debt to Rome.—By PROFESSOR H. G. DETTMANN, M.A.
5. Modern Views of Matter.—By PROFESSOR G. OWEN, D.Sc.
6. The Newer Physiology.—By DR. K. MACKENZIE, F.R.C.S.
7. Maori Voyagers and their Vessels.—By ELSDON BEST.
8. Further Additions to the Flora of the Mangonui County.—By H. CARSE.

9. New Species of Plants.—By T. F. CHEESEMAN, F.L.S.
10. Descriptions of New Native Phanerogams.—By D. PETRIE.
11. New Genera and Species of Coleoptera.—By MAJOR T. BROUN.

A selection from the above will appear in Volume 48 of the "Transactions," now being sent to press. Volume 47, which contains the papers read before the Incorporated Societies during 1914, has been issued during the year and distributed among the members.

MUSEUM.—With the exception of a very short period necessarily reserved for cleaning and rearrangement, the Museum has been open to the public during the year. The attendance of visitors has been satisfactory, showing a slight increase over the figures for last year. The register kept by the attendant on Sundays proves that 22,701 people entered the building on that day, being an average of 436 on each Sunday. The greatest attendance was 961 on April 4 (Easter Sunday), and the smallest 41 on November 21st, an unusually stormy day. On the nine chief holidays of the year the total number of visitors was 5,864, an average of 651 for each day. The greatest attendance for any one day was on Easter Monday (April 5th), when 1,407 people entered the building; the next being 1,155 on the King's Birthday. On ordinary week-days the visitors can only be occasionally counted; but it is believed that the daily average is not less than 215, which would make a total of 65,360. Adding this number to the figures given for Sundays and holidays, the total becomes 93,925. Last year the figures were given as 90,561.

In the Report for last year, the Council stated that it was obvious that no enlargement of the Museum, however necessary, could be effected during the continuance of the war. The only direction in which a possibility of obtaining more room existed was in making fuller use of the hall for many years occupied by the Russell Collection of plaster casts from the antique. Since the establishment of a Municipal Art Gallery, and the association with it of the Mackelvie Gallery, it had become evident that the growth and management of Art Collections in Auckland would be most satisfactorily conducted by the City Council. Similarly, the great expansion in recent years of the Maori Collections in the Museum clearly indicated the desirability of concentrating within the Museum all the ethnographical collections of the city. It was therefore decided to advocate a proposal to place the Russell Collection of Statues in the Art Gallery, and

the Grey Maori Collection in the Museum. The matter was sympathetically received by the City Council; and after a friendly interchange of opinions, it was decided that the Russell Collection should be handed over to the City on deposit, and the Grey Collection to the Museum; each body retaining the actual ownership of its articles, and preserving the right of withdrawal if circumstances should ever make such a course necessary. At a later date the Council decided to grant a request by the City Council to deposit for exhibition in the Old Colonists' Museum a series of 127 pictures, drawings, photographs, historical documents, sets of old newspapers, etc., bearing on the early history of Auckland. There can be no doubt that the agreement arrived at between the two bodies will be of mutual advantage, and will tend to the convenience of the citizens and of the public generally.

As soon as the removal of the statues placed the hall at the disposal of the Council, it was decided to utilise it for the reception in the first place of the Grey Maori Collection, which, under the agreement with the City Council, must be kept separate from the Maori Collections belonging to the Museum, and secondly, for the display of the fine series of foreign ethnographical articles in the possession of the Museum, a large proportion of which has never been exhibited. Much care has been taken in designing the show cases and other fittings required, and only the best material and the best workmanship has been admitted. The total cost has been about £600, which amount has been temporarily borrowed from the invested funds of the Society, with the understanding that it shall be returned in instalments as rapidly as possible, regular interest being payable on the sum outstanding. The show cases were completed in the month of November, since when the work of installing the exhibits has gone on uninterruptedly. With the view of adhering to a definite plan, the position and arrangement of the whole of the specimens have been personally indicated by the Curator, who is also preparing the whole of the labels required. The Curator desires to acknowledge the assiduous care with which Mr. Griffin has carried out his instructions. It is expected that the hall will be ready for opening in about a month's time.

Without unduly anticipating subsequent work, it can be stated that the change already effected will lead to several other improvements in the Museum. The small hall previously occupied by foreign ethnographical specimens will be converted into a mineral room, and will afford sufficient space to accommodate all the specimens in that class which it is desirable to exhibit at present. When that is disposed of, it will be possible to reserve the gallery of the Main Hall entirely for representatives of the

New Zealand fauna—birds, fishes, reptiles, shells and other invertebrata—and, in addition, to gain some space for exhibits to be prepared by the taxidermist. The Curator claims that on the completion of the present scheme the classification and arrangement of the Museum will be greatly improved, and that though the necessity for speedy enlargement will still exist, it will be possible to discharge for some little time most of the work and activities of the Institution.

Many additions of importance have been made to the Museum during the year. The most important accession to the Maori Collections is the huge carved gateway, over 21 feet in height, of the ancient Pa at Te Koutou, Lake Okataina, which has been purchased from the Maori owners. So far as can be ascertained, it was carved prior to 1820, and thus may possibly be well over 100 years of age. It is known to have been standing at the time of Hongi's raid on the Rotorua district in 1823. It was observed when the first Missionaries reached Rotorua a few years later; and a rough sketch of it is given in Terry's "New Zealand," published in 1843. Very few large Maori carvings now remain, and the Museum is fortunate in securing an example possessing both historical associations and ethnographical value. Other interesting additions are the stern-piece of an ancient war canoe, dug up near the bottom of a deep drainage canal on the Hauraki Plains, and presented by Mr. G. A. Hodge;



CARVED GATEWAY OF A MAORI
PA, 21 feet in height, formerly standing
at Lake Okataina.

a bone manaia, the figurehead of a small river canoe, and various other articles donated by Mr. G. Graham; a carved burial chest of unique type, an elaborately carved stern-post of a war canoe, several ancient albatross hooks, and other specimens purchased from various individuals.

In foreign ethnography, Dr. Bucknill, of Tauranga, has presented a valuable and comprehensive series of 79 selected specimens illustrating the development of English glassware from the time of the Roman occupancy to the 18th century. The series fills an entire case, and must be regarded as an addition of considerable interest and importance.

During the preparation of this Report another donation of special value has been received from Mr. Henry Shaw, well known in Auckland by his previous benefactions both to the Institute and the Free Library. It consists of a collection of 135 Japanese Ivories, Bronzes, and Cloissoné work, and contains many examples of indisputable age, and of much ethnographic and artistic excellence. The collection arrived after the show cases recently built had been apportioned to other exhibits, making it necessary to arrange for the construction of two additional cases. The Council have great pleasure in drawing the attention of the members to this renewed instance of liberality on the part of Mr. Shaw. The collection will find many admirers when the hall is available for public inspection.

Among numerous other additions the following deserve special mention:—Mr. A. F. Ellis has contributed several specimens from Ocean Island, of the Gilbert and Ellice Protectorate; Mr. J. L. Young has presented two stone carvings of considerable size from Eastern Polynesia; Miss Morrisby has donated an excellent little series of 33 specimens from South Africa; Mrs. Reid, of Motutapu Island, has presented a Polynesian collection of over 150 specimens, as well as a large series of shells; and finally, Mr. Cameron, the resident at Aitutaki, has forwarded two chiefs' carved seats, said to be the last remaining of that type on any of the Islands of the Cook Group.

In the Zoological Department a special group has been prepared illustrating the habits and mode of life of the North Island Kiwi (*Apteryx Mantellii*). It includes several excellent specimens of the adults of both sexes and of the young, together with the nest and eggs. It represents a little glade in the Waitakerei forest at the base of a large Rata tree, around which the Kiwis are arranged. The trunk of the tree, the foliage and undergrowth, and other accessories have been reproduced with great care by Mr. Griffin. The painted background is the work of the well-known artist Mr. Kennett

Watkins. Another conspicuous addition is a specimen of the round-snouted Sword Fish (*Histiophorus Herschellii*) caught by Mr. Campbell off Cape Brett, and kindly presented by him to the Museum. A painted plaster cast has been prepared by Mr. Griffin of the well-known Frost Fish, (*Lepidopus caudatus*), based upon a remarkably fine specimen forwarded from Mercury Bay by Mr. W. Bonella. Reference should also be made to a series of 19 skins of Chatham Island birds, purchased from Mr. S. Dannefaerd.

LIBRARY.—An expenditure of £141 3s. 8d. has been incurred on the Library during the year. An order for 90 volumes, dispatched long before the last Annual Meeting, was not executed until April, owing to the shortage of vessels dispatched to New Zealand; and the books were consequently not received in Auckland until the first week in July. A similar order of rather larger size was dispatched during November last, but no advice has yet been received of its shipment. A full list of all books added to the Library will be found in the appendix. The magazines and other serial publications subscribed to by the Institute, a list of which is given elsewhere, have been regularly received and made available for the use of members. The customary expenditure has been incurred in binding scientific periodicals and publication of Societies, about 75 volumes having been added from that source alone. Various books and memoirs, all mentioned in the appendix, have been received in exchange, and several donations have been made by private individuals. Among the latter, the Council have pleasure in mentioning Shelley's splendid monograph of the Sun-birds, with 121 coloured plates, presented by Mr. H. Shaw.

It should be remarked that the accommodation in the Library will be exhausted in about a year's time. It is not easy to say how the natural growth of the Library can be provided for after the expiry of that period, and the matter should receive the attention of the Library Committee at no very distant date.

In concluding the Report, the Council wish to tender the thanks of the Institute to the numerous donors to the Museum and Library whose names are mentioned in the attached lists. They also trust that the members and the public generally will continue to give that active support that has been so freely rendered in previous years.

The Treasurer in Account with the Auckland Institute and Museum Trust Board.

February 18, 1915, to February 22, 1916.

II.—MUSEUM ENDOWMENT ACCOUNT.

	£	s.	d.		£	s.	d.	
Balance in the Bank of New Zealand, February 18, 1915		2	15	0	Transferred to Investment Account	3,265	19	11
Endowments Sold	3,279	0	10		Transferred to Working Account	550	16	10
Rents of Endowments	91	16	3		Survey Charges on Endowments Sold	34	16	10
Interest on Investments	482	8	7		Bank Charges	0	10	0
					Balance in Bank of New Zealand, February 22, 1916	3	17	1
	£3,856	0	8			£3,856	0	8

13

III.—MACKECHNIE BEQUEST ACCOUNT.

	£	s.	d.		£	s.	d.	
Balance in the Bank of New Zealand, February 18, 1915		3	5	0	Transferred to Working Account for the Purchase of Books	105	0	0
Interest on Investments	105	0	0		Bank Charges	0	10	0
					Balance in Bank of New Zealand, February 22, 1916	2	15	0
	£108	5	0			£108	5	0

T. F. CHEESEMAN, Treasurer.

Examined and found correct.

S. GRAY, F.R.A., Auditor.

AIM Ann Report
1915 to 1916

List of Benefactions
made to the
Auckland Institute and Museum
of an amount (or value) exceeding £50.

1876.

£2,026 subscribed by the citizens of Auckland towards meeting the cost of the first portion of the present Museum Buildings. (This sum included two donations of £500 each from Mr. Justice Gillies and the Hon. T. Williamson.)

1876.

Presentation made by Mr. R. C. Barstow of a large and varied collection of Maori articles, including flax and dog-skin cloaks, carvings, greenstone ornaments, bone and stone meres, fish-hooks, etc., etc.

1877.

Bequest from Mr. G. F. Edmonston of 564 volumes of standard works on Physical and Natural Science.

1878.

Donation from Mr. T. Russell, C.M.G., of 34 plaster-casts and busts from the antique.

1878.

£106 donated by Mr. J. C. Firth to cover the expense of show-cases in the Museum.

1879-1883.

Mr. J. T. Mackelvie presented 260 volumes of books relating to the early history of New Zealand; 130 volumes of miscellaneous scientific works; a collection of ethnographical specimens from the Swiss Lake Dwellings; and 40 picked mineral specimens.

1884.

Bequest from Mr. Edward Costley of £12,150.

1887.

Bequest from Mr. David Nathan of £100.

1887.

Bequest of Maori articles from Mr. C. O. Davis, comprising dog-skin and feather mats; taiahas, paddles, spears; bone and wooden meres; carved boxes; and a variety of other articles.

17

1897-1898.

Donation of £100 from Mr. T. Russell, to cover the expense of forming a collection of geological specimens from the Cape Colville Peninsula.

1901.

Japanese Shinto Shrine, elaborately lacquered and decorated, presented by Mr. L. D. Nathan.

1901-1902.

£1,000 subscribed by the citizens of Auckland for the purchase of the Mair Collection of Maori Ethnographical Articles.

1902-1903.

Bequest of £2,500 from Mr. E. A. Mackechnie (£2,000 to be invested in order to produce an income for the purchase of books for the Library of the Institute; £500 to be expended in providing groups of the larger mammals and the necessary show-cases.)

1906-1907.

£662 subscribed by the citizens of Auckland for the purchase of Mr. Fenton's elaborately carved Pataka, and for the purchase and erection of the Runanga House, Rangitihī.

1911-1912.

£684 subscribed by the citizens of Auckland for the purchase of ancient historic Maori Carvings; and for other additions to the Museum.

1913.

Bequest of £1,000 from Sir John Logan Campbell.

1913.

Donation from Mr. Henry Shaw of 62 volumes of Geographical and Scientific works, and of 110 volumes from Mr. F. Shaw.

1913.

Unusually large and complete collection of Kauri Gum, containing 400 examples, together with the plate-glass show-case containing the same, presented by the Hon. E. Mitchelson.

1915.

Series of 79 specimens of Old English Glass, ranging from the time of the Roman occupancy of Britain to the middle of the eighteenth century. Presented by Dr. C. E. R. Bucknill.

1916.

Collection of 131 specimens of Japanese Ivories, Bronzes, and Cloissoné, many possessing considerable ethnographical and artistic value. Presented by Mr. Henry Shaw.

Additions and Donations

TO THE

Library and Museum.

- Parliamentary Papers and Reports; New Zealand Hansard for 1915; New Zealand Official Year Book; New Zealand Statistics for 1913; Annual Report of the Department of Agriculture for 1915; Journal of Agriculture for 1915; 48th Annual Report of the Dominion Laboratory; Suter's Atlas of Plates to the Manual of the New Zealand Mollusca; Alphabetical Hand-list of the New Zealand Mollusca; Revision of the Tertiary Mollusca of New Zealand, parts 1 and 2:—The New Zealand Government.
- Bulletin of the Geological Survey of New Zealand, No. 17:—The Geological Survey.
- Transactions of the New Zealand Institute, vol. 47:—The New Zealand Institute.
- Journal of the Polynesian Society, vol. 24:—The Society.
- Journal of the Linnean Society of New South Wales, parts of vols. 39 and 40:—The Society.
- Maiden's Revision of the genus *Eucalyptus*, vol. 3, pt. 2:—Dr. J. H. Maiden.
- British Association Handbook for New South Wales:—C. Hedley.
- Records of the Australian Museum, vol. 10, pt. 11:—The Museum.
- Annual Report of the Department of Mines, New South Wales:—The Department.
- The Australian Zoologist, vol. 1:—Zoological Society of New South Wales.
- The Australian Naturalist for 1915:—The Editor.
- Transactions of the Royal Society of Victoria, vol. 6; Proceedings, vol. 27 and vol. 28, part 1:—The Society.
- Memoirs of the National Museum, Melbourne, No. 6; Guide to the Ethnographical Collections:—The Museum.
- Biological Results of Fishing Expeditions in the "Endeavour," 1909-1914, vol. 3, parts 1-5:—The Commonwealth Government.
- Australian Monthly Weather Report, vol. 3, pts. 2-5; Australian Rain-fall Map, 1914; Ocean Current Map:—The Commonwealth Meteorologist.
- Proceedings of the Royal Society of Queensland, vol. 26:—The Society.

- Memoirs of the Queensland Museum, vol. 4:—The Museum.
- 22nd Annual Report of the Hawaiian Historical Society for 1913:—The Society.
- Westervelt's Legends of Old Honolulu:—The Author.
- Occasional Papers of the Bishop Museum, vol. 6, No. 2; Handbook of the Bishop Museum, part 1, the Hawaiian Collection:—The Bishop Museum, Honolulu.
- Journal of Agricultural Research, vol. 2, pt. 6; vol. 3, No. 1, 2, 4; vol. 4, No. 2, 3, 4; vol. 5, No. 15; Quaintance and Baker's Aleyrodidae; Hopkins's Classification of the Scolytoidea; Davis's Yellow Clover Aphis; Craighead's Prioninae; Baker's Woolly Apple Aphis; Bulletins U.S. Department of Agriculture, Nos. 100, 112, 113, 124, 131, 134, 156, 160, 161, 165, 167, 173, 184, 185, 189, 192, 197, 200, 204, 231, 233, 235, 239, 243, 245, 248, 250, 251, 252, 254, 255, 256, 261, 263, 273, 344:—The United States Department of Agriculture.
- Annual Report of the U.S. National Museum for 1913-1914; Proceedings, vol. 47; Gilmore's Osteology of the Armed Dinosauria in the National Museum; Nutting's American Hydroids, part 3; Bulletins Nos. 71, 82, 91; Contributions to the U.S. National Herbarium, vol. 17, pt. 6, and vol. 19:—The United States National Museum.
- Annual Report of the Field Museum for 1914; Botanical Series, vol. 2:—The Field Museum, Chicago.
- University of California, Botany, vol. 6, pts. 1 and 5:—The University.
- Summary Report of the Geological Survey of Canada for 1913, 1914; Bulletins of the Museum of the Geological Survey, Nos. 7, 8, 10, 11, 12, 13, 14, 15, 17, 18, 20, 21; Park's Building and Ornamental Stones of Canada; Cole's Gypsum in Canada; Kalmus's Properties of Cobalt; Kalmus's Electro-plating with Cobalt; Economic Minerals and Mining Industries of Canada; Daly's Geology of the 49th Parallel; Mineral Production of Canada for 1913; Freychette's Report on Non-metallic Minerals; McInnes' Basins of the Nelson and Churchill Rivers; Drysdale's Geology of Franklin; Haamel's Peat, Lignite, and Coal; Aurep's Peat-bogs and Peat Industries of Canada; Dowling's Coalfields and Coal Resources of Canada; Dowling's Coalfields of Manitoba and Saskatchewan; Dowling's Coalfields of British Columbia; Cairn's Moose Mountain District; Ries and Keele's Clay and Shale Deposits of Canada; Barlow's Corundum; Stansfield and Carter's Products and By-Products of Coal; Johnston's Canadian Mineral Occurrences; Cairne's Yukon-Alaska International Boundary; Clapp's Geology of Vancouver Island; Stauffer's Devonian of S.W. Ontario; Stansfield's Electro-thermic Smelting of Iron-ore in Sweden; Cairne's Upper White River, Yukon; Malcolm's Oil and Gas-fields of Ontario and Quebec:—The Geological Survey of Canada.
- Anales del Museo Nacional de Buenos Ayres, tomo 25:—The Museum.
- Boletín de Bosques, Pesca i Caza, tomo 2, Nos. 8-12:—The Forest Department, Chili.
- Annals of the Observatory of Rio Janeiro for 1915:—The Observatory.
- Report of the Rhodesia Museum for 1914:—The Museum.
- Kew Bulletin for 1914-1915; Icones Plantarum, parts of vol. 1:—The Director, Kew.
- The Empire Journal for 1915:—The Royal Colonial Institute.
- The Museums Journal for 1915:—The Museums Association.

- Symon's Meteorological Magazine for 1915:—The Editor.
Bulletins of the Dublin Museum of Science and Art issued in 1914-1915:
—The Museum.
Report of the Manchester Museum for 1913-1914; The Stela of Sebek-
Khu:—The Museum.
Shelley's Monograph of the Nectarinidae or Sun-Birds:—H. Shaw.
Science Abstracts, vol. 17:—Professor F. D. Brown.
Mounted Set of the Illustrations to Cook's Voyages, formerly the pro-
perty of Mr. Alfred Dewing, of Taruheru, Gisborne:—Presented by
his family through Colonel E. V. Dewing, R.E.
One Volume Botanical Papers:—T. F. Cheeseman.
White's Ancient History of the Maori, 6 vols:—Mr. J. Dennin.
Four Memoirs on Palms:—Dr. O. Beccari.
McGregor's Popular Maori Songs, new edition; Manuscript History of
certain areas in the North Island, written by a Maori Chief:—J.
McGregor.

BOOKS PURCHASED.

- Stott's Real Algeria.
Quinan's High Explosives.
Brame's Fuel.
Cohen's Organic Chemistry, vol. 2.
Ainsworth-Davies's Elements of Agriculture.
Hall's Pilgrimage of British Farming.
Fabre's Life of the Fly.
Legros's Fabre, Poet of Science.
Bell's Wilds of Maoriland.
Wright's Quaternary Ice Age.
Davenport's Economics of Enterprise.
Zimmer's Botanical Names.
Carmichael's Theory of Relativity.
Munsterberg's Psychology and Industrial Efficiency.
Strong's The Assyrian Goddess.
Cannan's Wealth.
Withers's Poverty and Waste.
Withers's Money-Changing.
De Morgan's Essays of Newton.
Mach's Analysis of Sensations.
Russell's Our Knowledge of the External World.
Seager's Principles of Economics.
Haldane's Mechanism, Life, and Personality.
Chapman's Australasian Fossils.
Bateson's Problems of Genetics.
Levick's Antarctic Penguins.
Scherer's Casein.
Sidgwick's Elementary Logic.
Crowther's Molecular Physics.
Leith's Structural Geology.
Lett's Problems in Chemistry.

- Royal Society's Catalogue of Scientific Papers, vol. 13.
Hitchcock's Text-book of Grasses.
Dreisch's History of Vitalism.
Houston's Studies in Water Supply.
Barbour's Influence of Gold Supply on Prices.
Higgs's Financial System of the United Kingdom.
Lamarck's Zoological Philosophy.
Truscott's Ore Deposits, vol. 1.
Zeemann's Researches in Magneto-Optics.
Silberstein's Theory of Relativity.
Eddington's Stellar Movements.
Alliotta's Idealistic Reaction against Science.
Geikie's Mountains—Origin, Growth, and Decay.
Scott's Land Mammals in the Western Hemisphere.
Alemic Club Reprints, Nos. 17 and 18.
Desch's Intermetallic Compounds.
Dunstan's Viscosity of Liquids.
Geikie's Structural Geology.
Geikie's Antiquity of Man in Europe.
Sheppard's Photo-Chemistry.
Chemical News-Index, vols. 1 to 100.
Haas's Chemistry of Plant Products.
Stewart's Recent Advances in Chemistry.
Leathes's The Fats.
Schryver's General Characters of the Proteins.
Barger's Simpler Natural Bases.
Tilden's Scientific Chemistry.
Plimmer's Chemical Constitution of the Proteins.
Osborne's Vegetable Proteins.
Baylis's Nature of Enzyme Action.
Harden's Alcoholic Fermentation.
Jones's The Nucleic Acids.
Kaye's X Rays.
Stewart's Chemistry and its Borderland.
Lyman's Spectroscopy of the Ultra-Violet.
Thomson's Rays of Positive Electricity.
Poynting and Thomson's Text-book of Physics, parts 1 and 2.
Mellor's Treatise on Quantitative Inorganic Analysis.
Cambridge British Flora, vol. 2.
Hocken's Early History of New Zealand.
Agassiz's Coral Reefs of the Pacific, 3 vols.
Zoological Record, vol. 50.
McIntosh's British Marine Annelids, vol. 3.
Whitaker's Ownership, Tenure, and Taxation of Land.
Goldmark's Fatigue and Efficiency.
Fleming's Wonders of Wireless Telegraphy.
Rountree and Pigou's Lectures on Housing.

Moritz's Memorabilia Mathematica.
Johnstone's Philosophy of Biology.
Morgan's Heredity and Sex.
British Association's Report for 1913.
Frazer's Golden Bough, vol. 12, Bibliography and Index.
Philosophical Transactions—A, vols. 213, 214; B, 205.

Group illustrating the habits and mode of life of the North Island Kiwi (*Apteryx Mantellii*):—Prepared in the Museum.
Skin of Kiwi:—G. F. Woodroffe.
Skin of Bush-hawk (*Hieracidea brunnea*):—F. L. Johnstone.
House Sparrow with deformed bill:—A. N. McKay.
Skin of Nelly (*Ossifraga gigantea*), killed by striking a telegraph wire in the Thames Valley:—E. J. Walters.
Egg of North Island Weka (*Ocydromus Earli*):—W. L. Williams.
Nineteen bird-skins from the Chatham Islands:—Purchased.
Albino Starling:—C. Seddon.
Albino Penguin (*Eudyptula minor*):—Victor Blackwell.
Skin of Turnstone (*Streptilas interpres*):—H. C. Wright.
Australian Curlew (*Numenius cyanopus*), shot in the Thames Valley:—E. Clinch.
Skin of Long-tailed Cuckoo (*Eudynamis taitensis*), shot at Vailima, Samoa:—H. C. Andow, Samoan Garrison.
Mummified Egyptian Skull:—Lieut. W. E. Carter, N.Z. Expeditionary Force.
Piebald Mouse:—G. A. Pearson.
Maori Skull:—F. A. Vickerman.
Imperfect Skeleton of Killer Whale (*Orca gladiator*):—W. J. Wheeler.
Series of Moa Feathers:—H. Hamilton.
Fragments of Moa Egg-shell:—G. J. Black.
Two Deep-sea Fishes (*Hoplichthys Haswellii* and *Coelorhynchus australis*):—Exchange from the Australian Museum, Sydney.
Sword-fish (*Histiophorus Herschellii*), caught at the Bay of Islands:—Mr. Campbell.
Specimen of *Pterygotrigla picta* dredged off Mayor Island:—Captain T. F. Nicholls.
Frost-fish (*Lepidopus caudatus*) stranded at Mercury Bay:—W. Bonella.
Pipe-fish (*Syngnathus sp.*) from Poverty Bay:—F. J. Williams.
Seven snakes from South Africa:—W. L. Winstone.
Hydrus platurus, stranded near Opotiki:—H. J. T. Dixon.
Hydrus platurus, stranded on the West Coast near Ahipara:—F. F. Wagener.
Tuatara Lizard, caught in Nelson Street, Auckland:—Miss L. Kavanagh.
Green Lizard (*Naultinus punctatus*), caught at Rukuhia:—G. Davies.
Green Lizard (*Naultinus punctatus*), caught at Matamata:—H. Moss.
Unusually fine specimen of *Venus Yatei*; various Foreign shells:—Hon. E. Mitchelson.

- Parcel of New Zealand Shells, collected at Lake Takapuna:—Miss E. M. Haselden.
- Cuttle-fish (*Sepioteuthis*), stranded in the Manukau Harbour:—E. V. W. Pearse.
- Young Cuttlefish (*Sepioteuthis*), stranded at Waipiro Bay:—W. O'Ryan.
- Specimens of *Paryphanta Hochstetteri* and allied species, collected in N.W. Nelson:—Gordon Field.
- Foreign Shells collected at Cape Leeuwin, Australia, with some New Zealand species from Mataora Beach, Waihi:—Miss Devereux.
- Puriri Moth (*Hepialus virescens*):—P. Ansell; J. Dempsey.
- Hair-worms (*Gordius sp.*):—G. Rigg.
- Fine specimen of *Heodictyon cibarium*:—Miss Gibbons.
- Fossil Shark's teeth; limestone with copper pyrites:—W. B. Upton.
- Various Volcanic Bombs, dug up in levelling the Outer Domain, Auckland:—Mr. Pearson.
- Specimen of Molybdenite:—Col. Boscawen.
- Numerous specimens of spherulitic Rhyolite from Paku, Tairua:—G. Cory-Wright.
- Uncoiled Ammonite from Mangamuka, Hokianga:—Mr. Yarborough.
- Remarkable Volcanic Bomb found at Onehunga:—H. Siebert.
- Green Chalcedony:—Mrs. Puckey.
- Large Block of Sulphur from White Island:—W. D. Grant.
- Agates, Carnelians, Chalcedony, etc., from Coromandel:—Mr. Bramley.
- Collection of Minerals from Waihi and Waikino:—W. Smith.
- Two Specimens of Native Arsenic from Coromandel:—W. A. Given.
- Grey Collection of Maori and Foreign Ethnography containing 507 numbers:—Deposited under special agreement with the Auckland City Council.
- Large Carved Gateway, or Waharoa, 21ft. in height, formerly standing at Te Koutou, Lake Okataina, and nearly 100 years old:—Purchased from the Maori owners.
- Five Albatross Hooks from Te Kaha, East Cape; Carved Sternpost of canoe; Ancient House Carving; Greenstone poria:—Purchased.
- Two carved heads of Canoes built to fight the Ngapuhi in retaliation for those killed in the capture of Totara Pa, Thames Valley. Many years ago came into possession of the late Mr. John White, author of the "Ancient History of the Maori," in which one of the heads is figured (vol. 2, p. 120):—Purchased from Mrs. White.
- Transverse board from Figure-head of Canoe; Figure-head of small river Canoe; Bone Manaia, formerly the property of the Chief Wiremu Potene; Woven basket used for serving up food, and called Rourou; Stone adze found on the summit of Mount Roskill; Lid of eel-trap found in a drain at Awataha, Shoal Bay:—Presented by G. Graham.
- Carved stone found on a hill at Tryphena, Great Barrier Island:—G. S. Nairn.
- Rough stone pounder; fishing weight; both found at Tauranga:—W. R. B. Oliver.
- Two kits covered with kiwi feathers, obtained at Taupo:—Mrs. H. Haines.
- Carved Burial Chest of unique design:—Purchased.
- Twist tobacco, as manufactured by the Maoris for their own use:—W. Allen.

- Stone flax-beater, found at Judea, near Tauranga; Curious wooden implement of unknown use, found in draining a swamp:—W. H. Gifford.
- Greenstone needle, found near Tauranga:—E. T. Baker.
- Greenstone ear-pendant from Te Kuiti; Pawa shell fish-hook; bone barb of fish-hook and bone fork prepared from the human radius, both found on Moturiki Island, Tauranga:—Dr. Bucknill.
- Handle of wooden scoop; iron fish-hook:—S. D. Fielding.
- Two fishing weights found at Motutara, Waitakerei:—Hon. E. Mitchellson.
- Fishing weight and two stone axes, found near Riverhead:—Richards Brothers.
- Stern portion of a large war canoe; fine hinaki, or eel-trap, both found at the bottom of a deep drain on the Hauraki Plains:—G. A. Hodge.
- Greenstone adze, showing an attempt to cut off a narrow strip:—Mrs. E. Keesing.
- Unusually large stone adze, or toki; small highly polished adze:—J. Ford Wilson.
- Greenstone Adze, showing how it has been made from a piece of greenstone partly fashioned into a hei-tiki:—F. C. Rollett.
- Large Collection of 135 Japanese Ivories, Bronzes, and Cloissoné:—Mr. Henry Shaw.
- Collection of 79 articles of Old English glassware:—Dr. Bucknill.
- Parcel of Flint Arrow-heads from Tennessee, United States:—T. Crook.
- Large Stone Bowl; large Stone Head; both from Eastern Polynesia:—J. L. Young.
- Necklace of human teeth; Knuckle-duster of cocoanut sinnet; Necklace of native shell-money; Fish-hook; Missile worked from the solid Tridacna shell and used in catching the Frigate bird after the fashion of a bolas:—A. F. Ellis.
- Large collection of Polynesian and Melanesian Ethnographical articles; large collection of shells; various mounted birds, etc.:—Mrs. Reid, Motutapu Island.
- Japanese Sword:—Purchased.
- Series of 33 Ethnographical articles from South Africa:—Miss Morrisby.
- Cavalry Sword and Brass Scabbard, of French origin, and said to have been used in the Moscow campaign of 1912:—J. Davis.
- Tamate Hats, as used by the Tamate Society of Motu, New Hebrides:—Rev. Mr. Turner.
- Seven New Zealand Copper Tokens:—D. B. Morrison.
- English Penny found in a Maori kitchen hidden at Tauranga:—A. G. Clegg.
- Old Pistol:—Mr. W. Stanton.

LIST OF MEMBERS

For the Year ending March 31, 1916.

(With Postal Addresses).

(Members are requested to advise the Secretary of any change of Address.)

[Honorary and Life Members distinguished thus *.]

- | | |
|--|---|
| Abbott, R. H., Elliott Street, Auckland. | Bankart, A. S., Shortland Street, Auckland. |
| Abel, R. S., care Abel, Dykes & Co., Shortland Street, Auckland. | Barr, J., Public Library, Wellesley Street, Auckland. |
| Adlington, Miss H., District High School, Whangarei. | Bartrum, J. A., University College, Auckland. |
| Aickin, G., Queen Street, Auckland. | *Bates, T. L., Brookfield, Alfred Street, Waratah, Newcastle, N.S.W. |
| Aldis, M., Empire Buildings, Swanson Street, Auckland. | Batger, J., Mt. Eden Road, Auckland. |
| Alexander, L. M., Beauvoir, Hurstmere Road, Takapuna. | Bell, T., care Union Oil, Soap and Candle Co., Albert Street, Auckland. |
| Alison, A., Devonport Ferry Co., Auckland. | Benjamin, E. D., care L. D. Nathan & Co., Shortland Street, Auckland. |
| Alison, E. W., Devonport Ferry Co., Auckland. | Biss, N. L. H., Shortland Street, Auckland. |
| Allen, John, Cheltenham, Devonport. | Blair, J. M., Market Road, Epsom |
| Ardern, P. S., Remuera. | Bloomfield, J. L. N. R., St. Stephen's Avenue, Parnell. |
| Arey, W. E., Victoria Arcade, Auckland. | Bond, Elon, Commerce Street, Auckland. |
| Armitage, F. L., Gleeson's Buildings, High Street, Auckland. | Bradley, Samuel, Onehunga. |
| Arnold, C., Swanson Street, Auckland. | Brett, H., "Star" Office, Shortland Street, Auckland. |
| Arnoldson, L., Quay Street, Auckland. | Briffault, R., M.B., Mt. Eden Road, Auckland. |
| Atkinson, H., Grafton Road, Auckland. | Brooke-Smith, E., Manukau Road, Parnell. |
| Bagnall, L. J., Wynyard Street, Auckland. | Broun, Major T., F.E.S., Mt. Albert, Auckland. |
| Baker, G. H., Commerce Street, Auckland. | Brown, E. A., Cleave's Buildings, High Street, Auckland. |
| Ball, W. T., Sylvan Avenue, Mt. Eden. | Brown, Prof. F. D., care of Auckland Institute, Auckland. |
| Bamford, H. D., LL.D., Bank of of N.Z. Buildings, Auckland. | Brown, John, Beresford Street, Bayswater, Devonport. |

AIM Ann Report 1915 to 1916

26

- Bruce, W. W., Williamson Chambers, Shortland Street.
- *Buchanan, A. V., Vulcan Lane, Auckland.
- Buddle, C. V., Wyndham Street, Auckland.
- Buddle, T., Wyndham Street, Auckland.
- Burns, R., Customs Street East, Auckland.
- Burnside, W., Education Offices, Auckland.
- Burt, A., care A. & T. Burt & Co., Custom Street West, Auckland.
- *Burton, Col., The Grove, Branksome Park, Bournemouth, England.
- Bush, W. E., City Engineer's Office, Town Hall, Auckland.
- Butler, Miss, Girls' Grammar School, Auckland.
- Buttle, J., N.Z. Insurance Co., Queen Street, Auckland.
- Campbell, J. P., Arney Road, Remuera.
- Casey, Maurice, Hamilton Road, Ponsonby.
- Cheal, P. E., Upper Queen Street, Auckland.
- Cheeseman, T. F., F.L.S., Museum, Auckland.
- Choyce, H. C., Remuera Road, Auckland.
- Clark, A., Wellesley Street, Auckland.
- Clark, H. C., care A. Clark and Sons, P.O. Box 35, Auckland.
- Clark, M. A., Wellesley Street, Auckland.
- Clay, T. B., care S. Vaile & Sons, Queen Street, Auckland.
- Coates, T., Orakei, Auckland.
- Coe, James, Mt. Eden Road, Auckland.
- Cole, Rev. R. H., Walford, Gladstone Road, Parnell.
- Cole, W., Mt. Eden Road, Auckland.
- Coleman, J. W., Lower Queen Street, Auckland.
- Combes, F. H., Victoria Avenue, Remuera.
- Cooper, C., Bourne Street, Mt. Eden.
- Cooper, Mr. Justice, Judges' Chambers, Auckland.
- Cory-Wright, S., B.Sc., University College, Auckland.
- Court, G., Karangahape Road, Auckland.
- Court, J., Ponsonby, Auckland.
- Cousins, H. G., Normal School, Wellesley Street, Auckland.
- Craig, J. J., Queen Street, Auckland.
- Cranwell, R., Crescent Road, Parnell.
- Crook, T., 10, Prospect Terrace, Mount Eden.
- Cuff, J. C., Emerald Hill, Epsom, Auckland.
- Culling, T. F., Victoria Avenue, Remuera.
- Currie, J. C., care J. Currie, 202, Queen Street, Auckland.
- Davis, Elliot R., Hancock & Co., Custom Street East, Auckland.
- Davis, Ernest, Hancock & Co., Custom Street East, Auckland.
- Dearsly, H., P.O. Box 466, Auckland.
- De Clive Lowe, Dr., Symonds Street, Auckland.
- Dempsey, J., Newmarket.
- Dennin, John, care Hon. E. Mitchellson, Waimauku.
- Dettmann, Professor H. S., University College, Auckland.
- Devereux, H. B., Glen Road, Stanley Bay, Devonport.
- Devore, A. E. T., Wyndham Street, Auckland.
- Dickenson, J. C., Public School, Ponsonby.
- Downard, F. N. R., Public School, Kuaotunu.
- Duthie, D. W., National Bank of New Zealand, Wellington.
- Earl, F., Swanson Street, Auckland.
- Edgerley, Miss K., Girls' Grammar School, Auckland.
- Edson, J., Waimarama, Tudor Street, Devonport.
- Egerton, Prof. C. W., University College, Auckland.
- Ellingham, W. R., Customs Street East, Auckland.

- Elliott, G., Bank of N.Z. Buildings, Queen Street, Auckland.
- Ellis, A. F., Argyle Street, Ponsonby.
- Ellis, J. W., Hamilton, Waikato.
- Ellison, T., Ellison's Buildings, Queen Street, Auckland.
- Endeand, J., Jermyn Street, Auckland.
- Entrican, A. J., Custom Street East, Auckland.
- Ewington, F. G., Durham Street, Auckland.
- Fairclough, Dr. W. A., Watson's Buildings, Queen Street, Auckland.
- Farrell, R., Anglesea Street, Auckland.
- Fenwick, Dr. G., Premier Buildings, Queen Street, Auckland.
- Fleming, J., 142, Grafton Road, Auckland.
- Florance, R. S., Stipendiary Magistrate, Gisborne.
- *Fowlds, Hon. G., Queen Street, Auckland.
- Frater, J. W., care R. Frater, Stock Exchange, Auckland.
- Garrard, C. W., M.A., Education Office, Auckland.
- George, G., Technical College, Wellesley Street, Auckland.
- George, Hon. S. T., St. Stephen's Avenue, Parnell.
- Gerard, E., Custom Street East, Auckland.
- Gilfillan, H., St. Stephen's Ave., Parnell.
- Girdler, Dr., Khyber Pass Road, Auckland.
- Gleeson, J. C., Selwyn Lodge, Parnell.
- Gleeson, P., Selwyn Lodge, Parnell.
- Goldie, D., Breakwater Road, Auckland.
- Gordon, H. A., Ranfurly Road, Epsom.
- Gorrie, H. T., A. Buckland & Sons, Albert Street, Auckland.
- Gould, A. M., Queen Street, Auckland.
- Graham, G., Tudor Street, Devonport.
- Grant, Miss J., M.A., Devonport.
- *Gray, A., Smeeton's Buildings, Queen Street, Auckland.
- Gray, S., Mt. Eden Borough Council Offices, Mt. Eden.
- Gribbin, G., Nicholson and Gribbin, Queen Street, Auckland.
- Griffin, L. T., Museum, Auckland.
- Grossmann, Professor J. P., University College, Auckland.
- Gunson, J. H., Custom Street W., Auckland.
- Gunson, R. W., Custom Street W., Auckland.
- Haddow, J. G., Wyndham Street, Auckland.
- Haines, H., F.R.C.S., Shortland Street, Auckland.
- Hall, Edwin, Onehunga.
- Hamer, W. H., C.E., Harbour Board Offices, Auckland.
- Hansard, G. A., care Parr and Blomfield, Shortland St., Auckland.
- Hansen, P. M., Queen Street, Auckland.
- Hardie, J. C., Hardie Bros., Queen Street, Auckland.
- Hawkins, Rev. Archdeacon H. A., Remuera.
- Hay, Douglas, Stock Exchange, Queen Street, Auckland.
- Hay, D. A., Montpelier Nursery, Remuera.
- Hazard, W. H., Queen Street, Auckland.
- Heather, H. D., Custom Street West, Auckland.
- Herbert, T., Shortland Street, Auckland.
- Hesketh, H. R., Wyndham Street, Auckland.
- Hesketh, S., Wyndham Street, Auckland.
- Holderness, D., Harbour Board Offices, Auckland.
- Horning, J. O., 78, Upper Pitt Street, Newton.
- Horton, E., "Herald" Office, Auckland.
- Horton, H., "Herald" Office, Auckland.

AIM Ann Report 1915 to 1916

28

- Houghton, C. V., N.Z. Shipping Co., Quay Street, Auckland.
Hutchison, W. E., Nelson Street, Auckland.
- Inglis, Dr. R. T., "Maroondah," Ponsonby Road, Auckland.
- Jackson, J. H., Custom Street E., Auckland.
Jacobsen, N. R., M.A., Hamilton, Waikato.
James, J. W., Mt. Albert.
Johnson, H. Dunbar, Manguahe-nga, Te Aroha.
*Johnson, Professor J. C., M.A., University College, Auckland.
Johnstone, Hallyburton, Howick.
Jones, H. W., Public School, Papakura.
- Kenderdine, J., Sale Street, Auckland.
Kent, B., Lower Symonds Street, Auckland.
Kent, G. S., St. Stephen's Avenue, Parnell.
Keyes, A., Birkenhead.
Knight, G., Asquith Avenue, Mt. Albert.
Kronfeld, G., Eden Crescent, Auckland.
- Lamb, R. E., 55 Pitt Street, Sydney, New South Wales.
Lamb, S. E., B.Sc., University College, Auckland.
Lancaster, T. L., University College, Auckland.
Lang, Sir F. W., M.P., Onchunga, Auckland.
Langguth, E., Federal Street, Auckland.
Larkin, H., Harbour Board Offices, Auckland.
Leighton, F. W., High Street, Auckland.
*Lennox, N. G., care Auckland Institute, Auckland.
Lewis, Dr. T. H., Remuera.
Leyland, W. B., care Leyland & O'Brien, Custom Street West, Auckland.
Leys, Cecil, "Star" Office, Shortland Street, Auckland.
Leys, T. W., "Star" Office, Shortland Street, Auckland.
- Lindsay, Dr. P. A., O'Rorke Street, Auckland.
Lunn, A. G., care Collins Bros., Wyndham Street, Auckland.
- Mackay, J. G. H., Ellison Chambers, Queen Street, Auckland.
Maclean, Murdoch, Contractor, Auckland.
*Macmillan, C. C., care Auckland Institute.
Mahoney, E., Shortland Street, Auckland.
Mahoney, T., Swanson Street, Auckland.
Mair, Capt. G., Waiotapu, Rotorua.
Mair, S. A. R., Hunterville, Wellington.
Major, C. T., King's College, Remuera.
Makgill, Dr. R. H., Public Health Office, Auckland.
Marriner, H. A., N.Z. Insurance Co., Queen Street, Auckland.
Marsack, Dr., care of Auckland Institute, Auckland.
McColl, J. L., Newmarket.
McDowell, Dr. W. C., Remuera.
McFarlane, T., C.E., Victoria Arcade, Queen St., Auckland.
McGregor, W. G., Shortland Street, Auckland.
McKenzie, Capt. G., Devonport.
Mackenzie, Dr. Kenneth, O'Rorke Street, Auckland.
McMurray, Rev. G., St. Mary's Vicarage, Parnell.
McVeagh, R., care Russell and Campbell, Wyndham Street, Auckland.
Mennie, J. M., Albert Street, Auckland.
Metcalfe, H. H., C.E., Palmerston Buildings, Queen Street, Auckland.
Miller, E. V., Chelsea, Auckland.
Milnes, H. A. E., Training College, Wellesley Street, Auckland.
Milroy, S., Kauri Timber Co., Custom Street W., Auckland.
Milsom, Dr. E. H. B., 18, Waterloo Quadrant, Auckland.
Mitchelson, Hon. E., Waitarua, Remuera.

Moore, J. E., Esplanade Road, Mt. Eden.

Morrison, A. R., Palmerston Buildings, Queen Street, Auckland.

Morrison, W. B., Hobson Buildings, Shortland St., Auckland.

Morton, E., Custom Street East, Auckland.

Morton, H. B., One-tree Hill, Epsom.

Moss, E. G. B., Swanson Street, Auckland.

Mulgan, E. K., Education Offices, Auckland.

Murray, G. W., Omaha Road, Remuera.

Myers, A. M., M.P., Campbell Ehrenfried Co., Queen Street, Auckland.

Napier, W. J., Security Buildings, Queen Street, Auckland.

Nathan, D. L., care L. D. Nathan & Co., Shortland Street, Auckland.

*Nathan, N. A., care L. D. Nathan & Co., Shortland Street, Auckland.

Nathan, S. J., 5, Carlton Gore Road, Auckland.

Neve, F., Technical College, Wellesley Street, Auckland.

Newton, G. M., *Herald* Buildings, Queen Street, Auckland.

Niccol, G., Customs Street W., Auckland.

Nicholson, O., Imperial Buildings, Queen Street, Auckland.

Oliphant, P., 24, Symonds Street, Auckland.

*Oliver, W. R. B., H.M. Customs, Auckland.

Osmond, G. B., Royal Insurance Buildings, Queen Street, Auckland.

Owen, Professor G., M.A., University Buildings, Auckland.

Pabst, Dr., Hobson Buildings, Shortland Street, Auckland.

Parr, C. J., C.M.G., M.P., Shortland Street, Auckland.

Partridge, H. E., Queen Street, Auckland.

Patterson, G. W. S., Shortland Street, Auckland.

Peacock, T., Queen Street, Auckland.

Peak, A., care Walker and Peak, Wyndham Street, Auckland.

Petrie, D., Rosmead, Epsom.

Philson, W. W., Colonial Sugar Co., Quay Street, Auckland.

Pond, J. A., F.C.S., Queen Street, Auckland.

Poole, G. S., Harbour Board Offices, Auckland.

Porter, A., care E. Porter & Co., Queen Street, Auckland.

Porter, Dr. A. H., Dominion Road, Mt. Eden.

Pountney, W. H., Commerce St., Auckland.

Powell, F. E., C.E., Ferry Buildings, Queen Street, Auckland.

Price, E. A., care Buchanan and Price, Albert Street, Auckland.

Pryor, S. H., 36, Pencarrow Avenue, Mount Eden.

Purchas, Dr. A. C., Carleton Gore Road, Auckland.

Pyeroff, A. T., Railway Offices, Auckland.

Ralph, W. J., Princes Street, Auckland.

Rangihiroa, Dr., care Auckland Institute, Auckland.

Rawnsley, S., Quay Street, Auckland.

Reid, J., 45, Fort Street, Auckland.

Renshaw, F., Sharland & Co., Lorne Street, Auckland.

Rhodes, C., Ronaki, Remuera.

Robb, J., Victoria Avenue, Mount Eden.

Roberton, A. B., Custom Street West, Auckland.

Roberton, Dr. E., Market Road, Remuera.

Robertson, Dr. Carrick, Alfred Street, Auckland.

Roche, H., Horahora, near Cambridge, Waikato.

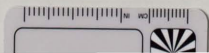
Rolfe, W., care Sharland & Co., Lorne Street, Auckland.

Rountree, S. G., Auckland Savings Bank, Auckland.

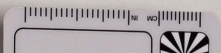
- Scott, Rev. D., The Manse, Onehunga.
Seegner, C., St. Stephen's Avenue, Parnell.
Segar, Prof. H. W., M.A., Manukau Road, Parnell.
Shakespear, Mrs. R. H., Whangaparaoa, near Auckland.
Shaw, F., Vermont Street, Ponsonby.
Shaw, H., Vermont Street, Ponsonby.
Shepherd, H. M., Birkenhead.
Simmonds, Rev. J. H., Wesley Training College, Epsom.
Simson, T., Mt. St. John Avenue, Epsom.
Sinclair, A., Kuranai, Symonds Street, Auckland.
Sinclair, G., care Pilkington & Co., Queen Street, Auckland.
Skelton, Hall, Watson's Buildings, Queen Street, Auckland.
Smeeton, H. M., Binswood, View Road, Mt. Eden.
Smith, Capt. James, Franklin Road, Ponsonby.
Smith, H. G. Seth, Russell, Bay of Islands.
*Smith, S. Percy, F.R.G.S., New Plymouth.
Smith, W. Todd, Brooklands, Alfred Street, Auckland.
Somerville, Dr. J., Alfred Street, Auckland.
Somerville, J. M., Chelsea, Auckland.
Spencer, Percy, Imperial Buildings, Queen Street, Auckland.
Spragg, Wesley, Mount Albert.
Stewart, James, care Stewart Bros., Helensville.
Stewart, J. W., Wyndham Street, Auckland.
Stewart, John A., Kainga-tonu, Ranfurly Road, Epsom.
Stewart, R. Leslie, care Brown & Stewart, Swanson Street, Auckland.
Streeter, S. C., Eden Street, Mt. Eden.
Stevens, J. L., care Auckland Institute, Auckland.
Swan, H. C., Henderson.
Swanson, W., Church Street, Devonport.
Talbot, Dr. A. G., A.M.P. Buildings, Queen Street, Auckland.
Taylor, W., Kempthorne, Prosser & Co., Albert Street, Auckland.
Thomas, Prof. A. P. W., Mountain Road, Epsom.
Thornes, J., Queen Street, Auckland.
Tibbs, J. W., M.A., Grammar School, Auckland.
*Tinne, H., Union Club, Trafalgar Square, London.
Tole, Hon. J. A., Queen Street, Auckland.
Trounson, J., Northcote.
Tunks, C. J., care Jackson & Russell, Shortland Street, Auckland.
Upton, J. H., Queen Street, Auckland.
Upton, P., South British Insurance Co., Queen St., Auckland.
Urquhart, A. T., Karaka, Drury.
Vaile, E. E., Broadlands, Waioapu.
Vaile, H. E., Queen Street, Auckland.
Wade, H. L., Victoria Arcade, Queen Street, Auckland.
Wake, F. W., Wyndham Street, Auckland.
Walker, Prof. Maxwell, University College, Auckland.
Walklate, J. J., Electric Tramway Co., Auckland.
Wallace, T. F., Waihi G.M. Co., Shortland Street, Auckland.
Walters, J. R., Onslow Road, Kingsland, Auckland.
Ward, Percy, Mountain Road, Remuera.
Ware, W., Portland Rd., Remuera.
Warnock, J. A., 2, King Street, Grey Lynn.
Watson, Rev. C. A. B., St. Paul's Vicarage, Auckland.
Wells, T. U., Westbourne Road, Remuera.
White, R. W., Wellington Street, Auckland.

- Whitley, W. S., Albert Street, Auckland.
- Whittome, F., Carlton Road, Newmarket.
- Williams, Right Rev. W. L., D.D., Napier.
- Wilson, Albert, St. Stephen's School, Parnell.
- Wilson, A. P., Victoria Avenue, Remuera.
- Wilson, F. W., "Herald" Buildings, Queen Street, Auckland.
- Wilson, H. Munro, C.E., Palmerston Buildings, Queen Street, Auckland.
- Wilson, John, Portland Cement Co., Shortland Street, Auckland.
- Wilson, J. M., Beach Road, Remuera.
- Wilson, Liston, Mountain Road, Remuera.
- Wilson, Martin, Rozelle, Lower Remuera.
- Wilson, R. M., Russell Road, Remuera.
- Wilson, W. R., "Herald" Office, Queen Street, Auckland.
- Wilton, G. W., Cuba Street, Wellington.
- Winkelmann, H., Victoria Arcade, Queen Street, Auckland.
- Winstone, F. B., Custom Street, Auckland.
- Winstone, G., Custom Street, Auckland.
- Wiseman, J. W., Albert Street, Auckland.
- *Withy, E., care of Auckland Institute, Auckland.
- Woodward, W. E., Union Bank of Australia, Queen St., Auckland.
- Woolcott, A. C., South British Insurance Co., Queen Street, Auckland.
- Worley, Professor F. P., D.Sc., University College, Auckland.
- Wright, R., care A. B. Wright & Co., Commerce St., Auckland.
- Wyllie, A., C.E., Electrical Power Office, Breakwater Road, Auckland.
- Yates, E., Albert Street, Auckland.
- Young, J. L., care Henderson & Macfarlane, Custom Street, Auckland.

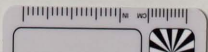
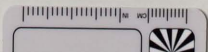
AIM Ann Report
1915 to 1916



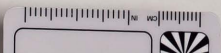
AIM Ann Report
1915 to 1916



AIM Ann Report
1915 to 1916



AIM Ann Report
1915 to 1916



AIM Ann Report
1915 to 1916

